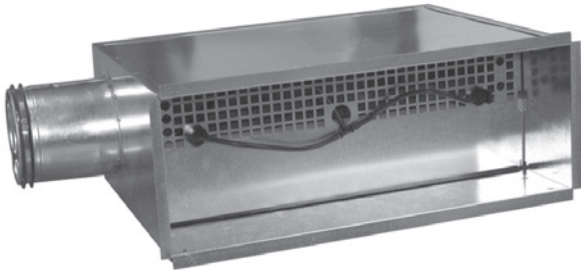


# Plenum box

# WB



## Description

WB is a plenum box for supply air intended to achieve a stable flow to rectangular front plates or grilles. WB is equipped with an adjustment damper and pressure measuring device. The plenum box can be connected from the side or the back. The adjustment damper is operated from the front of the box by means of a graduated handle with integrated locking mechanism.

WB is equipped with a telescopic connection that can be adjusted up to 50 mm, which provides flexibility during the installation phase. WB has a maximum width of 500 mm, which ensures that you can install the box in a standard wall structure with a centre distance of 600 mm between the plasterboard struts.

- Telescopic function
- Easy-to-detach face plate for access to duct
- Same box used for all front types

## Order code

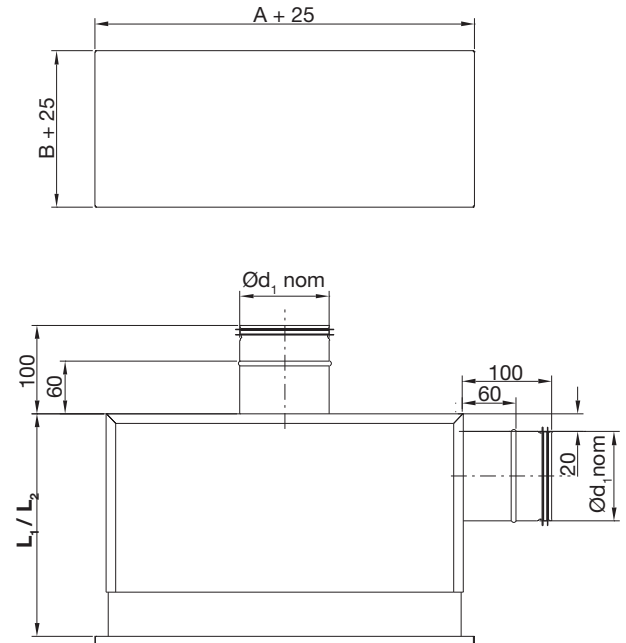
See section on wall diffusers.

## Order code

<b>Product</b>	<b>WB</b>	<b>a</b>	<b>A x B</b>
<b>Type</b>	WB		
<b>Connection</b>			
	1 = Back		
	2 = Side		
<b>Size (A x B)</b>			
	300x100 - 500x300		

Example: WB-1-400x150

## Dimension



A x B	Ød <sub>1</sub>		A	B	Back L <sub>1</sub>	Side L <sub>2</sub>	Weight
	nom						Kg
300 x 100	80		300	100	240-290	280-330	2.5
400 x 150	100		400	150	240-290	300-350	3.5
500 x 150	125		500	150	240-290	325-375	4.3
500 x 200	160		500	200	240-290	360-410	5.5
500 x 300	200		500	300	240-290	400-450	7.4

## Materials and finish

Box, plenum plate and damper are made of hot-galvanised steel plate.